

**ANKRD24 Antibody (Center)**  
**Purified Rabbit Polyclonal Antibody (Pab)**  
**Catalog # AP20751c****Specification**

---

**ANKRD24 Antibody (Center) - Product Information**

Application	WB,E
Primary Accession	<a href="#">Q8TF21</a>
Reactivity	Human
Host	Rabbit
Clonality	Polyclonal
Isotype	Rabbit IgG
Calculated MW	124187

**ANKRD24 Antibody (Center) - Additional Information****Gene ID** 170961**Other Names**

Ankyrin repeat domain-containing protein 24, ANKRD24, KIAA1981

**Target/Specificity**

This ANKRD24 antibody is generated from a rabbit immunized with a KLH conjugated synthetic peptide between 296-328 amino acids from the Central region of human ANKRD24.

**Dilution**

WB~~1:1000

E~~Use at an assay dependent concentration.

**Format**

Purified polyclonal antibody supplied in PBS with 0.09% (W/V) sodium azide. This antibody is purified through a protein A column, followed by peptide affinity purification.

**Storage**

Maintain refrigerated at 2-8°C for up to 2 weeks. For long term storage store at -20°C in small aliquots to prevent freeze-thaw cycles.

**Precautions**

ANKRD24 Antibody (Center) is for research use only and not for use in diagnostic or therapeutic procedures.

**ANKRD24 Antibody (Center) - Protein Information****Name** ANKRD24 ([HGNC:29424](#))**Synonyms** KIAA1981**Function** Component of the stereocilia rootlet in hair cells of inner ear. Bridges the apical plasma

membrane with the lower rootlet and maintains normal distribution of TRIOBP, thereby reinforcing stereocilia insertion points and organizing rootlets for hearing with long-term resilience.

#### Cellular Location

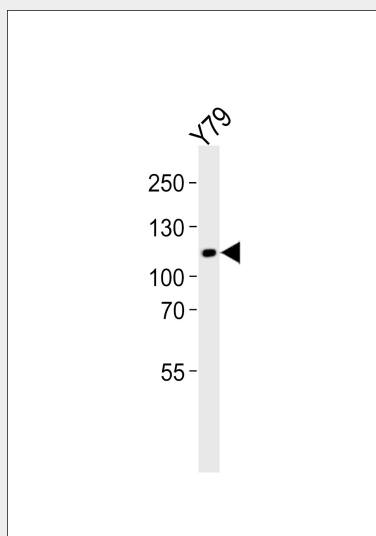
Cell membrane {ECO:0000250|UniProtKB:Q80VM7}. Cell projection, stereocilium {ECO:0000250|UniProtKB:Q80VM7} Note=Localizes to hair cell stereocilia rootlets. Concentrated to the stereocilia insertion point. {ECO:0000250|UniProtKB:Q80VM7}

#### ANKRD24 Antibody (Center) - Protocols

Provided below are standard protocols that you may find useful for product applications.

- [Western Blot](#)
- [Blocking Peptides](#)
- [Dot Blot](#)
- [Immunohistochemistry](#)
- [Immunofluorescence](#)
- [Immunoprecipitation](#)
- [Flow Cytometry](#)
- [Cell Culture](#)

#### ANKRD24 Antibody (Center) - Images



Western blot analysis of lysate from Y79 cell line, using ANKRD24 Antibody (Center)(Cat. #AP20751c). AP20751c was diluted at 1:1000. A goat anti-rabbit IgG H&L(HRP) at 1:5000 dilution was used as the secondary antibody. Lysate at 35ug.

#### ANKRD24 Antibody (Center) - References

Grimwood J.,et al.Nature 428:529-535(2004).  
Nagase T.,et al.DNA Res. 8:319-327(2001).